



 SYLVANSPORT®

LOFT®

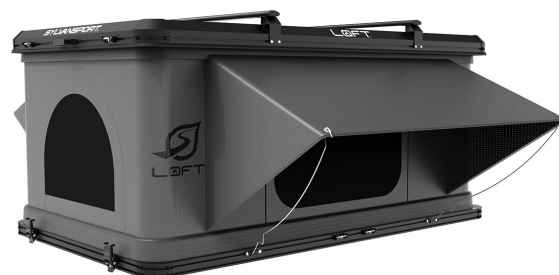
ROOFTOP TENT CAMPER

USER GUIDE AND SETUP INSTRUCTIONS





Closed



Open



1.

SylvanSport LOFT™ - Rooftop Tent Camper

Congratulations on your new SylvanSport LOFT™ - Rooftop Tent Camper! LOFT™ is a complete package for any outdoor adventure. Compatible with most rack systems and vehicles, LOFT™ is convenient, easy to set up, and take down.

LOFT™ is lightweight and versatile. Mount it on a car, truck, or SUV. Attach LOFT™ to the SylvanSport GO EASY™ kayak trailer to create TrailLOFT™ - the ultimate micro camper. Off the ground and easy to access, TrailLOFT™ sets up in seconds. Disconnect from your tow vehicle and free yourself (and your vehicle) to go anywhere, any time.

LOFT™ Contents:

A. LOFT™ Rooftop Camper	Qty. 1	20097-00
B. Vestibule/Entry Awning Poles	Qty. 4	20097-08
C. Extendable Access Ladder	Qty. 1	20097-03
D. Top Rack Extrusion Crossbars	Qty. 2	20097-15
E. Top Rack Extrusion Mounts	Qty. 4	20097-14
F. Top Rack Mounting Bolts - M8	Qty. 8	20097-18 (Kit)
G. Top Rack Mounting Lock Nuts - M8 Flanged	Qty. 8	20097-18 (Kit)
H. Top Rack Crossbar End Caps	Qty. 4	20097-17
I. Mounting Bolts - M8 x 1.25 x 35mm	Qty. 8	20097-23
J. Mounting Sliders	Qty. 8	20097-07 (Kit)
K. Mounting Lock Nuts - M8	Qty. 8	20097-07 (Kit)
L. Mounting Plates	Qty. 4	20097-07 (Kit)
M. Mounting Extrusion End Caps	Qty. 4	20097-12
N. Shoe Bag	Qty. 1	20097-33
O. Hardware Bag - Zippered	Qty. 1	20097-NA
P. LOFT™ User Guide and Set-up Instructions	Qty. 1	20097-36

Please take an accounting of your components and make sure everything has arrived complete and good working order.

Note: Instructions apply to mounting your new SylvanSport LOFT™ to a car, truck, or SUV, or the SylvanSport GO EASY™ kayak trailer (TrailLOFT™ combo).





LOFT™

Installation instructions

Before you begin:

Be sure your vehicle and rack system are capable of accepting a rooftop camper of this weight and dimensions.

Predetermine the location of your LOFT™ on your vehicle rack system. As much as possible, try to center the LOFT™ fore and aft on your crossbars. Beware of any obstructions, such as tailgates and **make sure access to the latches are not obstructed**. As much as possible, center the LOFT™ left to right. You may have to move to one side or the other slightly, to mount the ladder, without making contact with your roof, depending on the size of your vehicle. It helps to consider which side you will be using as a door, once you are set up and camping.

Lay out your LOFT™ and hardware kit and make sure everything is accounted for. You should have: 8 mounting plates, 8 bolts and 8 lock nuts. Having a socket wrench will speed up the installation process.

Set awning poles, ladder, (and jack stands - TraiLOFT™) to the side. You can pack poles, and ladder inside the LOFT™ for travel.

Installation: For this step use parts I, J, K and L.

A. On the underside of your LOFT™ you will find two long extrusions. Each extrusion has an opening on either end (4 total), to start sliding in your mounting slider assemblies.

Note: LOFT™ comes with M8 X 1.25 35mm bolts, depending on the crossbars you are mounting to, you may need longer or shorter bolt - be sure to buy M8 x 1.25.

B. Push a bolt (I) down, through the mounting hole in slider (J), so the bolt head is secure in the track and repeat again on a second slider (J). Slide the assemblies into the extrusion opening, as shown in illustration B.

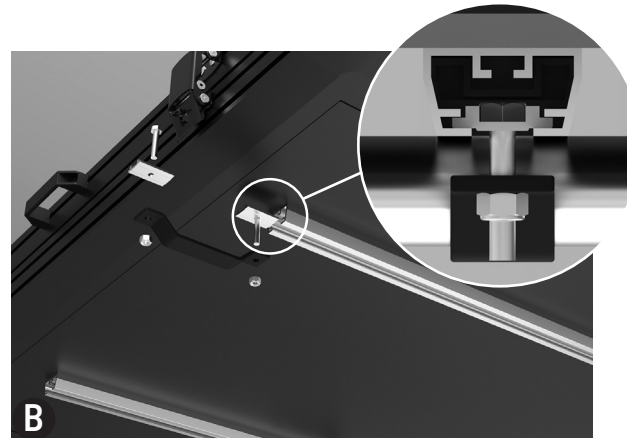
C. While lifting LOFT™ slightly, position each mounting plate assembly so one mounting plate assembly sits on either side of the rack crossbar, fore and aft. Install mounting plate (L) on to each bolt, then Loosely thread one lock nut (K) to each bolt.

D. Position all four mounting plate assemblies as shown in illustration D. Do not tighten assemblies yet.

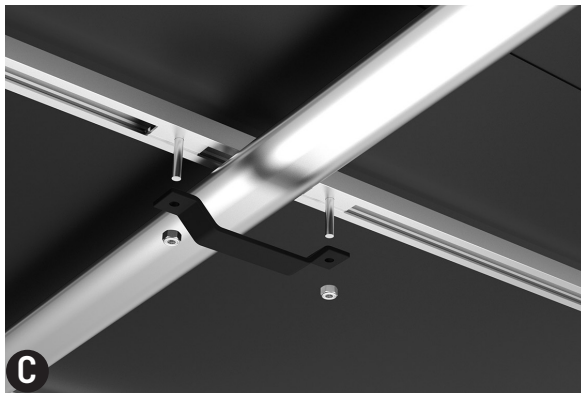
E. Make sure your LOFT™ position is centered (as much as possible) front to back, left to right and be sure there are no obstructions. If you are satisfied with the LOFT™ position, securely tighten all mounting lock nuts, then secure end caps to mounting extrusions.



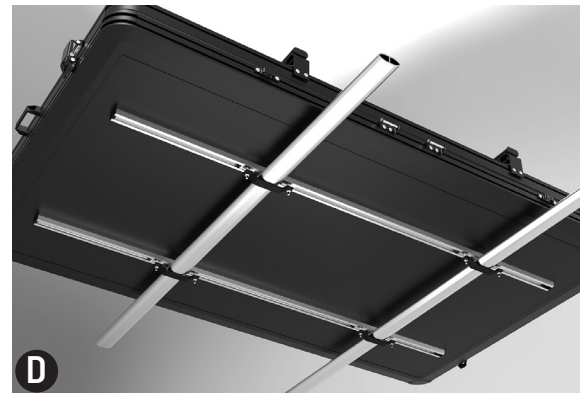
Four extrusion entrance points



Slide mounting plate assemblies, into extrusion entrance



Position mounting plate assembly on front and back of each crossbar



Four mounting plate locations

* IMPORTANT

Be sure there are no obstructions to vehicle hatch or hood



Center the LOFT™ fore and aft for optimal balance



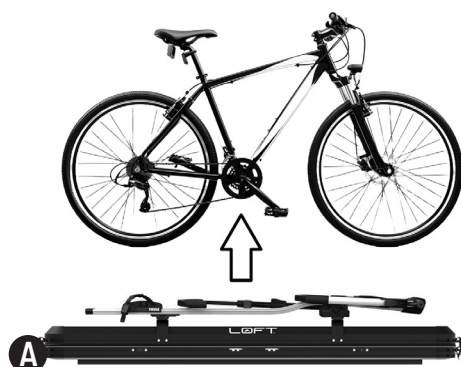
Center the LOFT™ left to right



WARNING

Tighten lock nuts securely. Be sure all latches are secure before travel.





Remove boats, bikes and cargo from the top racks.



Stabilize and level your vehicle.



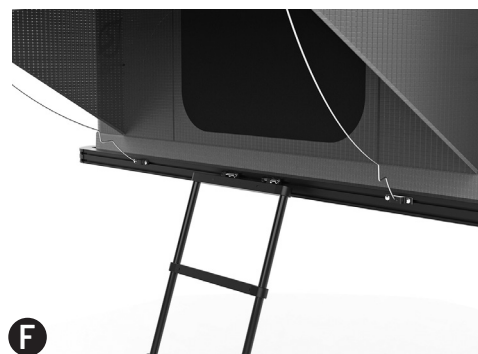
Release front and rear latches.



Lift up one end, then the other (or both simultaneously).
Lower bungee cord, out of the way.



Awning poles plug in to brackets on frame and grommeted holes in awning.



Attach ladder to brackets and drop to comfortable position for entering and exiting

Camping set up and take down instructions

Before you begin:

Choose a site that is as level as possible. Be sure your LOFT™ is free from obstructions, such as tree branches and structures.

Be sure your LOFT™ is stabilized. When installed on a vehicle, it is best to assure you are parked on level ground. When mounted to a SylvanSport GO EASY™, (TrailLOFT™) be sure you are on level ground and make sure both jack stands are secured to the bottom, rear frame/bumper. Use leveling blocks if necessary.



WARNING

**Be sure LOFT™ is stabilized before use.
Unload boats and bikes from top racks
before raising.**

Set up:

A. Choose a level campsite, stabilize, and level your vehicle. If using a trailer, be sure to deploy stabilizer jacks to prevent sideways or fore and aft tipping. For TrailLOFT™, be sure to utilize both jack stands or leave attached to vehicle.

B. Remove any boats, bikes, or other cargo from the LOFT™ crossbars. The lift arms are not rated for additional weight when open/deployed.

C. Release the two front and two rear latches completely, by lifting up on the lower tab so the upper tab clears the latch pin. The latches are lockable and it is recommended to use one lock in a front facing latch, for added security.

D. Using either the front or rear handle, gently pull up on the upper frame assembly. The internal lift arm system will raise the entire structure into its camping position. Repeat on other side.

E. Pull the lower fabric skirt tight, along the bottom of the shell. Remove the 4 awning poles from carrying bag. Place the non-hook end of one pole into the bracket hole located below the entry door, angled outward for tension (on either side of entrance opening). Bend pole upward and hook into grommeted awning hole. Repeat on other side of LOFT™ as well, if desired.

F. Open the ladder by removing velcro retaining strap. Attach ladder hooks to side brackets of LOFT™, located under the door openings on either side. Drop the ladder until a comfortable angle is achieved for entering and exiting the LOFT™. **Read the ladder safety labels before operating, especially at higher extensions.**





LOFT™

Camping set up and take down instructions

G. Both the awning and the entrance screen have a strap and retention loop, enabling you to easily roll them up and out of the way.

H. The LOFT™ comes with a “shoe bag” convenient for storing dirty shoes and keeping the LOFT™ interior clean.

Note: Your LOFT™ comes with a port, intended for use as an electrical pass-thru. There is a slot on the side of the entrance awning, for passing a cable from above (solar panels) and a flap on the tent side for bringing cable(s) inside the LOFT™.

Take down:

A. Remove ladder from LOFT™ and lower each rung by pushing the latches inward. **Do not place any body part including hands, fingers or thumbs on or between rung or couplings above last secured rung.** When ladder is fully lowered, use the velcro strap to secure it and set inside LOFT™.

B. After removing ladder, remove awning poles, and shoe bag(s), carefully place items inside LOFT™. Make sure the items are laying flat and will not impede on the closing operation. Raise bungee cord back to middle of tent, to assist gathering fabric material when closing.

C. Push down on the front upper shell by using either the webbing straps or the handles. It is easier to have somebody at the front and somebody at the rear, pull down front, then the rear (or vice versa). Be sure all fabric, straps, etc. are inside the shell and not sticking out.

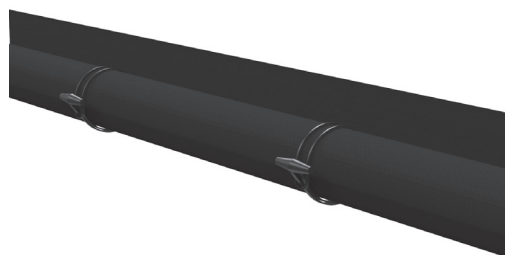
D. Secure all four latches. It is highly recommended to attach and secure one front latch with a lock. This will insure the security of all items inside as well as provide one more level of secure closure for the shells.

Note: Once LOFT™ is fully closed and locked, you may replace bikes and boats onto the upper racks.

⚠ WARNING

Check that all latches are secured before travel.

4.



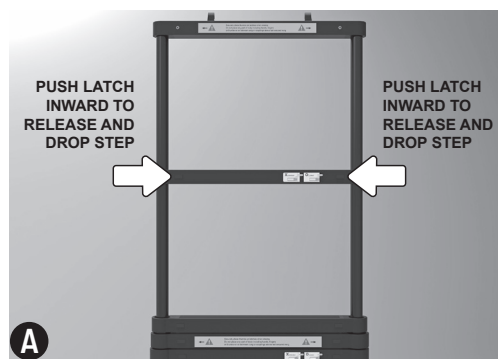
G

Screens and privacy panels roll up and attach at the top, with toggle and loop tiebacks.



H

Shoe bag attaches to track in lower frame.



A

Collapse ladder, take caution not to pinch fingers. Follow safety instructions on ladder labels.



B

Remove poles, shoe bag, close windows and return bungee cord to middle of tent.



C

Gently push down on front, then the rear. Two people, (one front and one back) makes this easier.



D

Tighten straps and fasten latches - 4 side straps, 1 front latch and 1 back latch.





Storage, care and handling tips

LOFT™ is designed to give you years of trouble-free enjoyment. However, proper care is required to reduce the likelihood of breakage, excessive wear and tear, damage from the elements and to keep it looking good.

Post-trip maintenance:

1. Open all windows and doors, so your LOFT™ can dry out. With a vacuum or brush, clean out the interior as needed.
2. The tent fabric can be cleaned by using a mild detergent or a tent fabric cleaning solution, warm water, and a soft brush or sponge.
3. Rinse tent fabric completely, so no detergent remains on the fabric.
4. Dry the tent completely before storing, to help prevent mildew or mold from forming. When possible, dry in the direct sunlight with windows and doors open. Be sure tent is completely dry before storing.
5. Remove the mattress and anti-condensation mat and let dry in the sun.
5. Inspect the rest of the LOFT™ and remove any dirt or objects from zippers, fabric skirt, hydraulic arms, etc. and clean as necessary.
6. The aluminum shell can be rinsed off with soapy water, as you would a vehicle.
7. The mattress comes with a removable, fitted fabric sheet. Wash in a conventional washing machine and dryer and replace as necessary.

Long term storage:

1. Be sure to store in a dry, safe environment. Storage in prolonged dampness can promote mildew and mold growth.
2. When storing outside, a cover is recommended. UV exposure, tree sap, birds, etc. can effect the appearance and reduce the lifespan of your LOFT™.

Limited warranty

SylvanSport, LLC (the manufacturer) warrants to the original retail purchaser only, for a period of (2) two year, that each new LOFT™ - Rooftop Tent Camper will be free from defects in workmanship and materials under normal use and service, as described below.

The manufacturer's obligation under this limited warranty is limited to repairing or replacing at its factory, or authorized dealer, any part or parts thereof which shall, within the applicable warranty period, be returned to the manufacturer, with transportation charges prepaid, and which upon the manufacturer's examination shall disclose to its satisfaction to have been defective.

Note: Labor and freight charges, coverage on all limited warranties provided herein are limited to two years from the date of the original retail purchase.

Aluminum shell and frame:

SylvanSport, LLC warrants to the original purchaser only, that the frame of the LOFT™ - Rooftop Tent Camper will be free from defects in workmanship and materials for two years under normal use and service, or until the product is no longer in the original owner's possession.

This warranty does not cover maintenance, such as rust prevention, paint, scratches.

This warranty does not apply to mildew, mold, abrasions, shrinkage, fading and/or soiling. Damages of this nature must be reported at the time of retail delivery to be covered by this warranty.

This warranty shall not apply to general wear and usage such as fading or discoloration of the tent fabric, tears, punctures, soiling, mildew, chips on panels, effects of moisture, condensation inside the camper, mishandling, neglect, abuse, misuse, lightning or other acts of nature or corrosive atmospheres. Any of the aforementioned items must be noted at the time of retail delivery for any warranty coverage.

Warranty service:

SylvanSport, LLC authorizes any and all of our active dealerships to provide warranty service to our SylvanSport product line on items proven to be substantially defective in material and/or workmanship during the applicable warranty period. Our authorized dealerships may be located by visiting sylvansport.com

Parts and design changes:

SylvanSport, LLC reserves the right to make changes in its parts, components and/or design at any time without notice or obligation to make available to the consumer any



items or parts or components which it has discontinued, as long as a “suitable for use intended” replacement item is made available.

Warranty does NOT cover damage to vehicles due to improper installation. Installation brackets and fasteners should be inspected prior to every road trip to assure proper tightening and alignment. Normal road vibration WILL cause standard fasteners to loosen over time. It is the owners responsibility to insure the LOFT™ is securely attached to your vehicle.

Warranty registration:

This SylvanSport, LLC warranty is void unless a fully completed warranty registration has been returned to us within 30 days of retail purchase.

THE LIABILITY OF THE MANUFACTURER UNDER THIS LIMITED WARRANTY IS LIMITED TO THE REPAIR OR REPLACEMENT AS SPECIFIED ABOVE. REPAIR OR REPLACEMENT SHALL BE ONLY AT THE MANUFACTURER'S FACTORY "OR AUTHORIZED DEALER." THIS IS THE EXCLUSIVE AND COMPLETE WARRANTY MADE BY THE MANUFACTURER. THE MANUFACTURER MAKES NO OTHER EXPRESS OR IMPLIED WARRANTIES, AND DISCLAIMS ANY EXPRESSED OR IMPLIED WARRANTY OF MERCHANTABILITY OF FITNESS FOR A PARTICULAR PURPOSE AND ALL OTHER APPLICABLE WARRANTIES. THIS WARRANTY IS ALSO IN LIEU OF ALL OTHER OBLIGATIONS OR LIABILITIES ON THE PART OF THE MANUFACTURER. THE LIABILITY OF THE MANUFACTURER UNDER THIS LIMITED WARRANTY DOES NOT EXTEND TO LOSS OF TIME, INCONVENIENCE, LOSS OR USE OF ANY PRODUCT OR OTHER GOOD INCORPORATING OR UTILIZING THE MANUFACTURER'S CAMPING TRAILER (OR ANY LOSS OF ANY PROFITS RESULTING THEREFROM), INJURY TO PERSON, OR ANY OTHER INCIDENTAL, CONSEQUENTIAL OR PUNITIVE DAMAGES WHATSOEVER.

Specs:

Dimensions - Closed: 83.5" x 52.5" x 8.0" | 212 x 133 x 20 cm

Dimensions - Open: 83.5" x 52.5" x 39.5" | 212 x 133 x 100 cm

Weight: 147.7 lbs | 67 kg

Material - Shell: Aluminum, black powder-coat

Material - Tent: 280g T/C fabric with PU coating

Material - Mattress: 2.5" 40D foam sleeping pad

Ventilation and access: Two doors and two windows. High-density screen windows provide 4-way air circulation and prevent mosquitoes from entering

Lift System: 4 hydraulic assist arms, open and close in seconds

Contact information:

LOFT®



SYLVANSPORT®

21 Welcome Street | Brevard, NC 28712

p 828-393-4927

info@sylvansport.com | sylvansport.com



SYLVANSport®

21 Welcome Street | Brevard, NC 28712
p 828-393-4927
info@sylvansport.com | sylvansport.com

rev 5_31_2024

